

The logo for 'm-mag' is rendered in a large, light blue, blocky font with thick black outlines. The letters are set against a background of a bright blue sky with two white, fluffy clouds. Below the sky is a green hill with rolling contours. The foreground is a lush green field of tall grass with several white daisies scattered throughout.

# m-mag

## FINAL EDITION

**This m-mag was completed by**

.....



# NEW PEOPLE, NEW PLACES

Tom has texted you for some advice  
about making new friends.

Can you help Tom by telling him about you?

Read Tom's messages and dial the number that matches you the best.

- 1** = A lot like you
- 2** = Mostly like you
- 3** = Like you
- 4** = Sometimes like you
- 5** = Not like you





# THE EPIC QUIZ!!

ANSWER THE QUIZ QUESTIONS BY TICKING THE BOX THAT IS MOST LIKE YOU

**I call people by their real names**



A lot  
like you

☐

Mostly  
like you

☐

Like you

☐

Sometimes  
like you

☐

Not  
like you

☐

**I look at people when they are speaking**



A lot  
like you

☐

Mostly  
like you

☐

Like you

☐

Sometimes  
like you

☐

Not  
like you

☐

**I walk up to people and start a conversation**



A lot  
like you

☐

Mostly  
like you

☐

Like you

☐

Sometimes  
like you

☐

Not  
like you

☐

**I ask questions when talking with others**



A lot  
like you

☐

Mostly  
like you

☐

Like you

☐

Sometimes  
like you

☐

Not  
like you

☐

**I look at people when I talk with them**



A lot  
like you

☐

Mostly  
like you

☐

Like you

☐

Sometimes  
like you

☐

Not  
like you

☐



# FRIENDS

**What kind of friend are you? Circle the face that matches you the most.**

*I came to school today with my imaginary friend. When everyone said "hi" to him, I said, "He's just pretend."*

*But no one seemed to notice, which I thought was pretty weird. It turns out he'd imagined me, and, poof, I disappeared.*

**I cheer up a friend who is hurt**



A lot like you



Mostly like you



Like you



Sometimes like you



Not like you

**I know how to make friends**



A lot like you



Mostly like you



Like you



Sometimes like you



Not like you

**I see my friends often**



A lot like you



Mostly like you



Like you



Sometimes like you



Not like you

**I stick up for my friends**



A lot like you



Mostly like you



Like you



Sometimes like you



Not like you

**I show my feelings**



A lot like you



Mostly like you



Like you



Sometimes like you



Not like you

**I make other people laugh**



A lot like you



Mostly like you



Like you



Sometimes like you



Not like you

**I feel sorry when I hurt someone**



A lot like you



Mostly like you



Like you

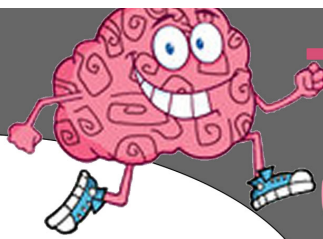


Sometimes like you



Not like you





# THINK FAST

Use your stickers to answer  
**YES or NO**  
to the questions below.

Put your  
sticker  
here

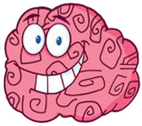
IT'S HARD FOR ME TO  
SEE WHY SOMEONE ELSE  
GETS UPSET...

Put your  
sticker  
here

PEOPLE WHO  
KISS AND HUG  
IN PUBLIC ARE SILLY!



I THINK IT'S FUNNY THAT  
SOME PEOPLE CRY DURING A  
SAD MOVIE OR WHILE  
READING A SAD BOOK



Put your  
sticker  
here

Put your  
sticker  
here

IT'S SILLY TO TREAT  
CATS AND DOGS AS  
THOUGH THEY HAVE FEELINGS  
LIKE PEOPLE...

KIDS WHO CRY  
BECAUSE THEY ARE  
HAPPY ARE SILLY...

Put your  
sticker  
here

Put your  
sticker  
here

I DONT FEEL UPSET IF A  
CLASSMATE IS PUNISHED  
FOR BREAKING THE RULES

I GET MAD WHEN I SEE  
A CLASSMATE PRETENDING  
TO NEED HELP FROM THE  
TEACHER ALL THE TIME...

Put your  
sticker  
here

Put your  
sticker  
here

KIDS WHO HAVE NO  
FRIENDS PROBABLY DONT  
WANT ANY...



I AM ABLE TO EAT  
ALL OF MY SWEETS  
EVEN WHEN I SEE SOMEONE  
LOOKING AT ME  
WANTING ONE...

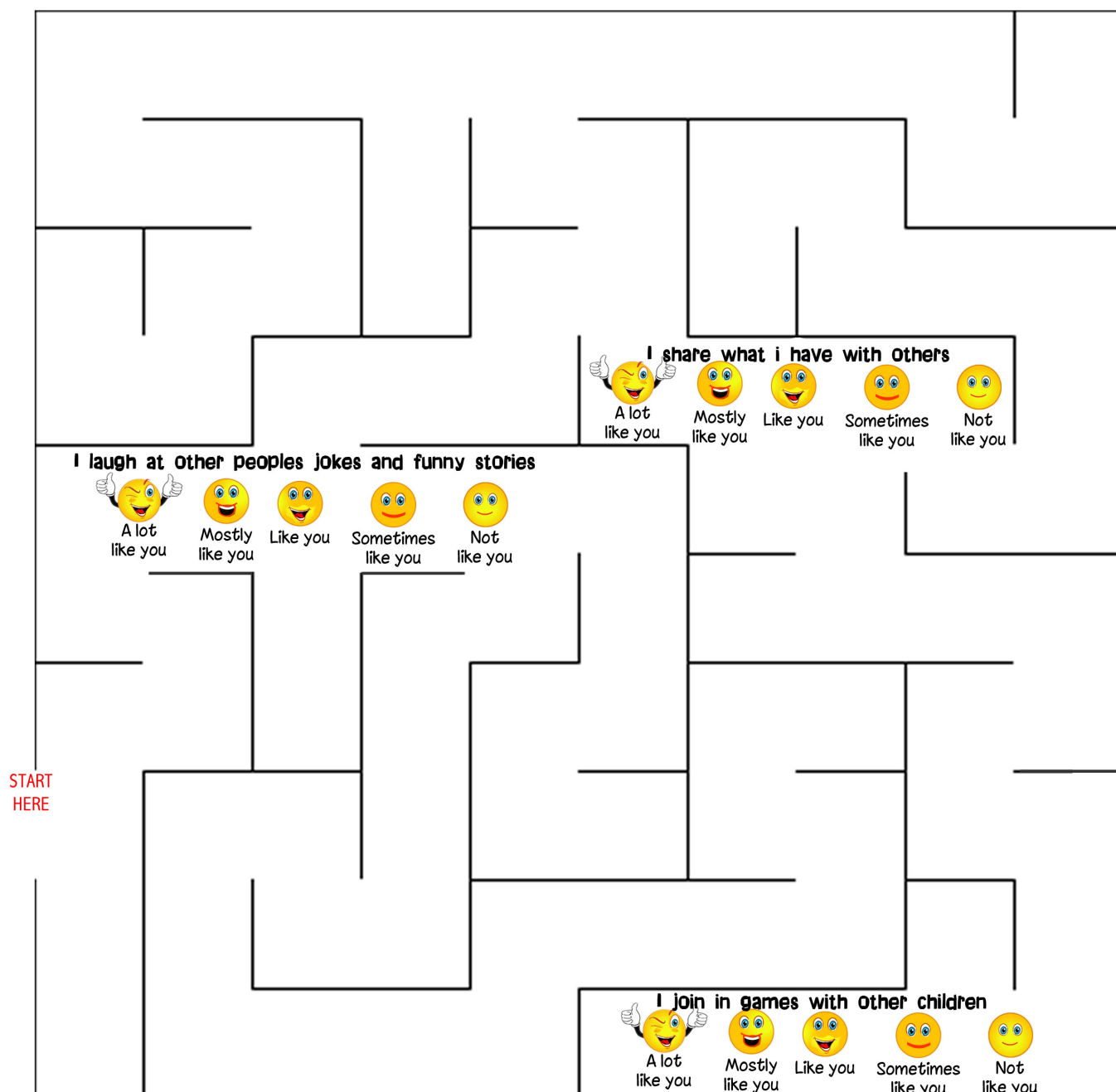
Put your  
sticker  
here





# MAZE DAYS

FIND YOUR WAY FROM THE START TO THE END OF THE MAZE.  
ANSWER THE QUESTIONS AS YOU GO.

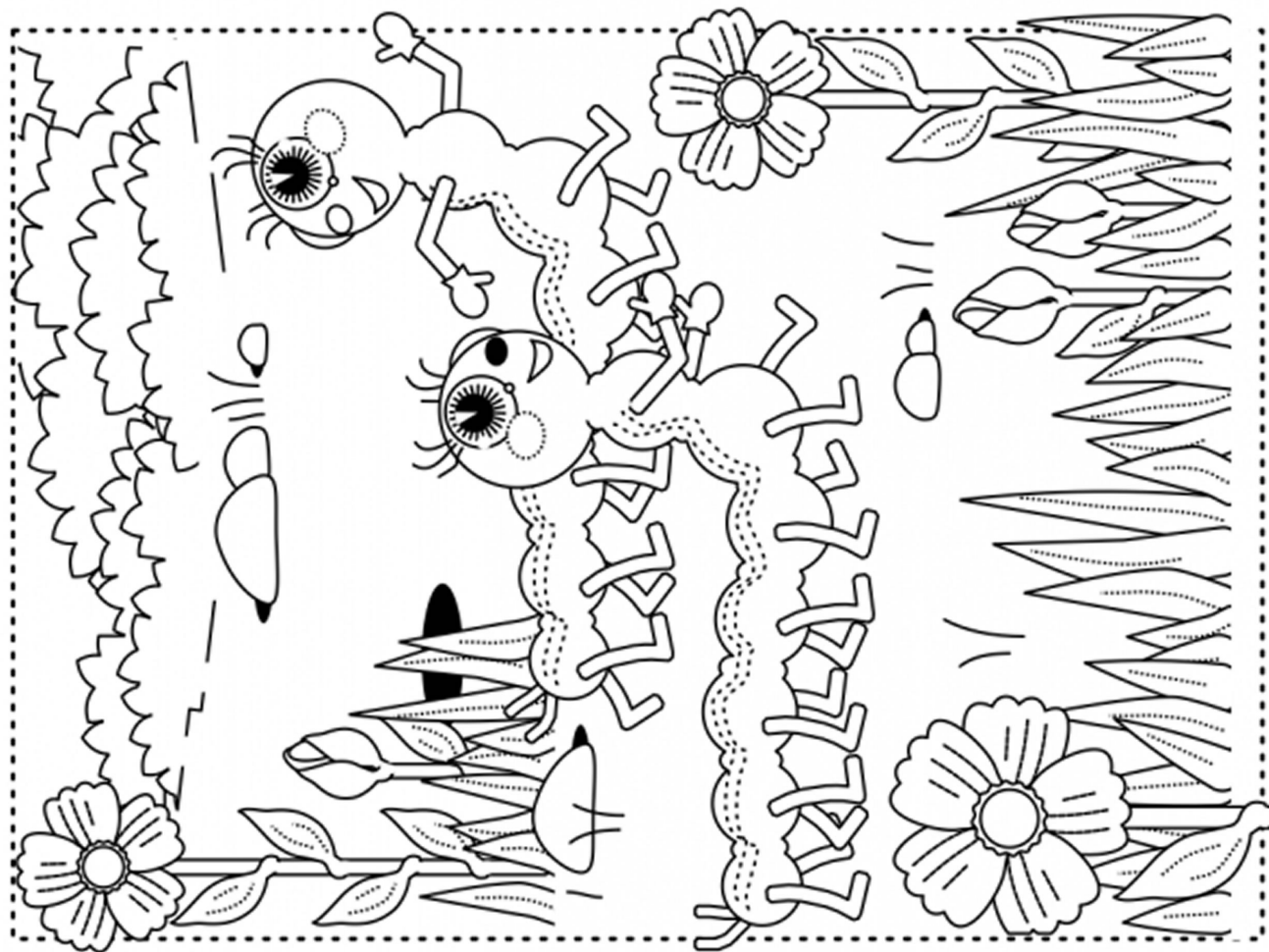


END





Find the ten differences between the two pictures.





**YES**

**NO**

**YES**

**NO**

**YES**

**NO**

**YES**

**NO**

**YES**

**NO**

**YES**

**NO**

**YES**

**NO**

**YES**

**NO**

**YES**

**NO**

**YES**

**NO**

**YES**

**NO**

**YES**

**NO**

**YES**

**NO**

**YES**

**NO**

**YES**

**NO**

**YES**

**NO**